



MONTHLY MEMBERSHIP PROGRESS REPORT

District 324A4

Results as of: 11/30/2015

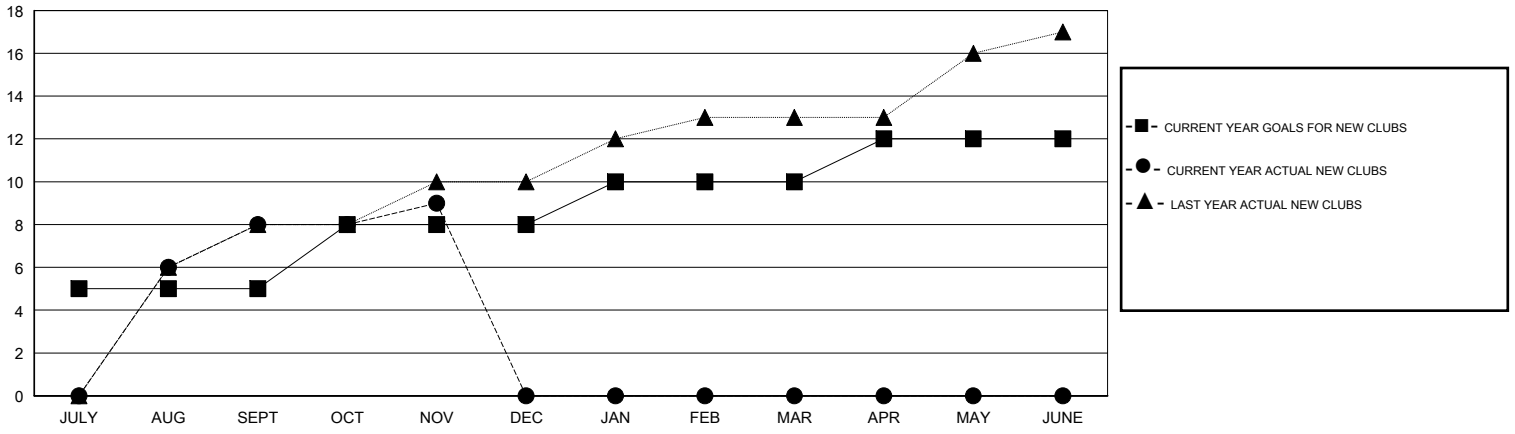
GMT: ER GURUNATHAN

LOCATION INDIA

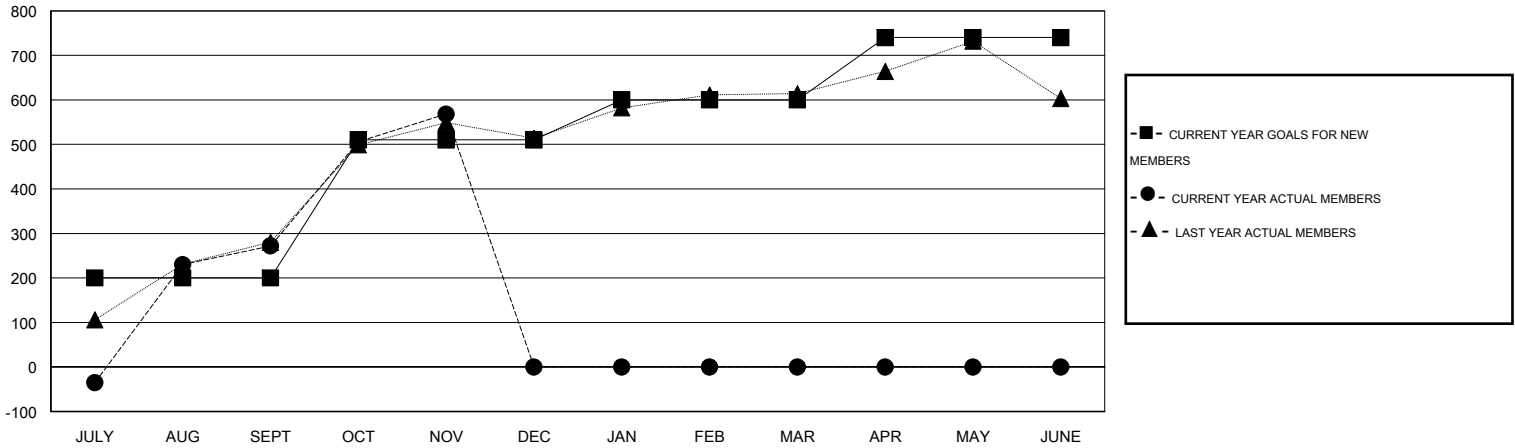
GMT CA 6

| Clubs | | | | | Members | | | | |
|-----------------------|---------------|-----------|---------------|---------------|-----------------------|-----------------|-------------------------------|-----------------|---------------|
| RESULTS FOR 2015-2016 | | | | | RESULTS FOR 2015-2016 | | | | |
| QUARTER | NEW CLUB GOAL | NEW CLUBS | DROPPED CLUBS | NET GAIN/LOSS | QUARTER | NEW MEMBER GOAL | CHARTER AND NEW MEMBERS ADDED | DROPPED MEMBERS | NET GAIN/LOSS |
| JULY/AUG/SEPT | 5 | 8 | 1 | 7 | JULY/AUG/SEPT | 200 | 483 | 211 | 272 |
| OCT/NOV/DEC | 3 | 1 | 0 | 1 | OCT/NOV/DEC | 310 | 328 | 32 | 296 |
| JAN/FEB/MAR | 2 | 0 | 0 | 0 | JAN/FEB/MAR | 90 | 0 | 0 | 0 |
| APR/MAY/JUNE | 2 | 0 | 0 | 0 | APR/MAY/JUNE | 140 | 0 | 0 | 0 |

GOALS AND ACTUAL NEW CLUBS CUMULATIVE



GOALS AND ACTUAL MEMBERS CUMULATIVE



| | | | |
|------------------------|---|---|----------------|
| DROPPED CLUBS: 1 | 85 CLUBS OF 119 ADDED 1 OR MORE NEW MEMBERS | <u>GENDER DISTRIBUTION</u> | |
| <u>DROPPED MEMBERS</u> | | MALE | 4,069 (92.12%) |
| DECEASED | 5 | FEMALE | 348 (7.88%) |
| CLUB CANCELLED | 0 | CLICK HERE FOR HEALTH ASSESSMENT DATA | |
| OTHER | 238 | FAMILY UNIT MEMBERS | 341 |
| TOTAL | 243 | HEAD OF HOUSEHOLD | 159 |
| | | NON-HEAD OF HOUSEHOLD | 182 |